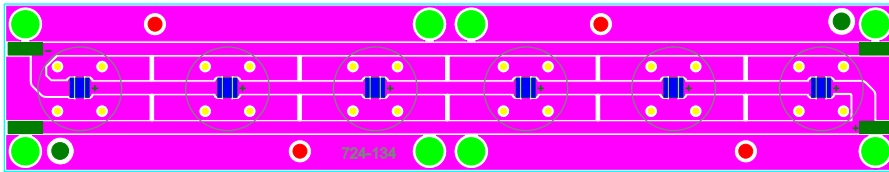
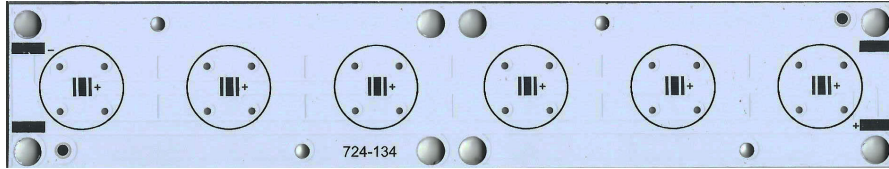




## Datasheet PCB Code-BK-724-134

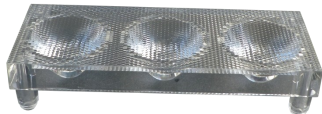


**LED** 1w Power



Size: 30 x 160 mm  
 Thickness: 1,6 mm  
 Weight: 19 g  
 Electricity Line: Copper  
 Thickness of copper: 35um  
 Thickness of the dielectric: 70um  
 Thickness of the aluminum-base: 1.5mm

### Lenses for PCB 724-134:



3 LB 30 D



3 LB 50 D



3 LB 2060 DT



The result of the test:

Item	Test item	Technology request	Unit	Test result	
1	Peel Strength	A	≥1.8	N/mm	2.0
	After thermal stress ( 260°C )		≥1.8	N/mm	1.8
2	Blister test After Thermal stress ( 288°C , 2min )	288°C, 2 min No delaminating	/	Ok	
3	Thermal resistance	≤2.0	°C/W	1.0	
4	Thermal-Conductive Factor		W/m-k	1.0	
5	Flammability(A)	FV-O	/	FV-O	
6	Surface Resistivity	A	≥ 1×10 <sup>5</sup>	MΩ	5×10 <sup>7</sup>
	Constant humidity treatment (90%,35°C,96h)		≥ 1×10 <sup>5</sup>	MΩ	2×10 <sup>6</sup>
7	Volume Resistivity	A	≥ 1×10 <sup>6</sup>	MΩ·m	4×10 <sup>8</sup>
	Constant humidity treatment (90%,35°C,96h)		≥ 1×10 <sup>6</sup>	MΩ·m	5×10 <sup>7</sup>
8	Dielectric Breakdown(DC)	≥ 28.5	KV/MM	31	
9	Dielectric constant(1MHz) (40°C, 93%, 96h)	≤4.4	/	4.2	
10	Dielectric dissipation factor (1MHz) (40°C , 93% , 96h)	≤0.03	/	0.02	